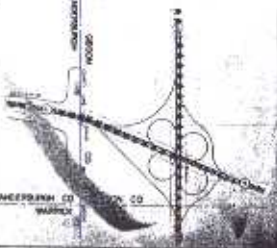
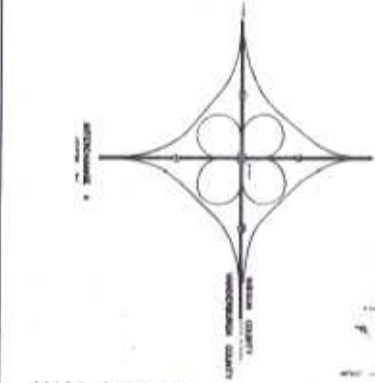
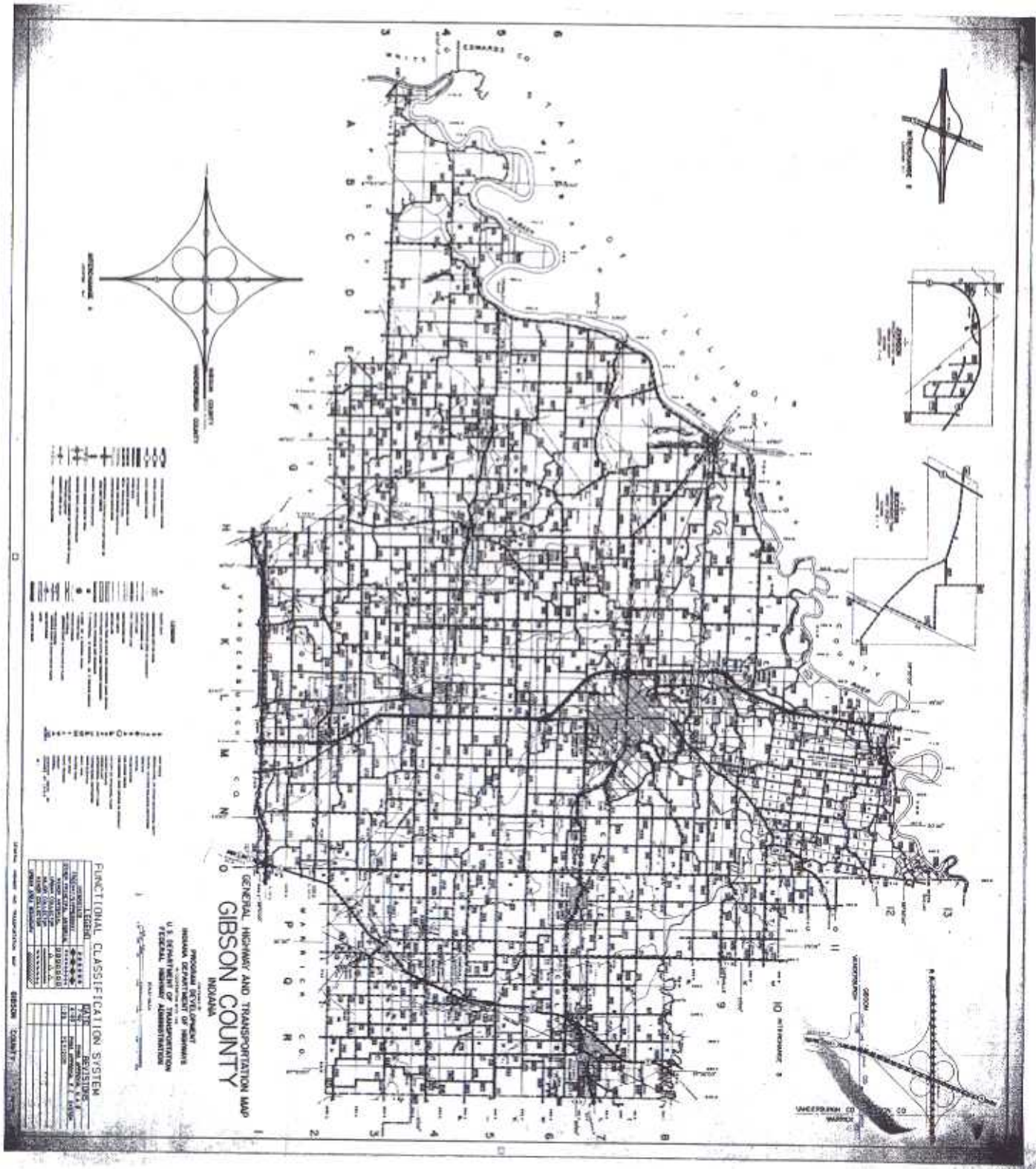


# APPENDIX C



- 1. Interstate Highway
- 2. U.S. Highway
- 3. State Highway
- 4. County Highway
- 5. Local Road
- 6. Railroad
- 7. Canal
- 8. River
- 9. Lake
- 10. City
- 11. Town
- 12. Village
- 13. School
- 14. Church
- 15. Post Office
- 16. Gas Station
- 17. Telephone
- 18. Electric Line
- 19. Water Tower
- 20. Windmill
- 21. Barn
- 22. Farm
- 23. Forest
- 24. Swamp
- 25. Mountain
- 26. Hill
- 27. Valley
- 28. Plain
- 29. Desert
- 30. Beach
- 31. Island
- 32. Peninsula
- 33. Strait
- 34. Bay
- 35. Harbor
- 36. Inlet
- 37. Shoals
- 38. Reef
- 39. Sandbar
- 40. Spit
- 41. Point
- 42. Headland
- 43. Neck
- 44. Isthmus
- 45. Trench
- 46. Ridge
- 47. Spur
- 48. Branch
- 49. Tributary
- 50. Confluence

**FUNCTIONAL CLASSIFICATION SYSTEM**

ROAD TYPE	EXISTING	PLANNED
Interstate Highway	—	—
U.S. Highway	—	—
State Highway	—	—
County Highway	—	—
Local Road	—	—
Railroad	—	—
Canal	—	—
River	—	—
Lake	—	—
City	—	—
Town	—	—
Village	—	—
School	—	—
Church	—	—
Post Office	—	—
Gas Station	—	—
Telephone	—	—
Electric Line	—	—
Water Tower	—	—
Windmill	—	—
Barn	—	—
Farm	—	—
Forest	—	—
Swamp	—	—
Mountain	—	—
Hill	—	—
Valley	—	—
Plain	—	—
Desert	—	—
Beach	—	—
Island	—	—
Peninsula	—	—
Strait	—	—
Bay	—	—
Harbor	—	—
Inlet	—	—
Shoals	—	—
Reef	—	—
Sandbar	—	—
Spit	—	—
Isthmus	—	—
Trench	—	—
Ridge	—	—
Spur	—	—
Branch	—	—
Tributary	—	—
Confluence	—	—

**GENERAL HIGHWAY AND TRANSPORTATION MAP**  
**GIBSON COUNTY**  
 INDIANA

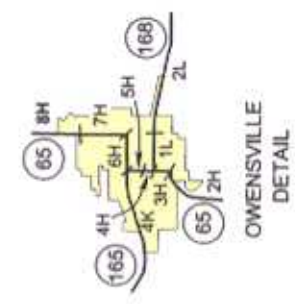
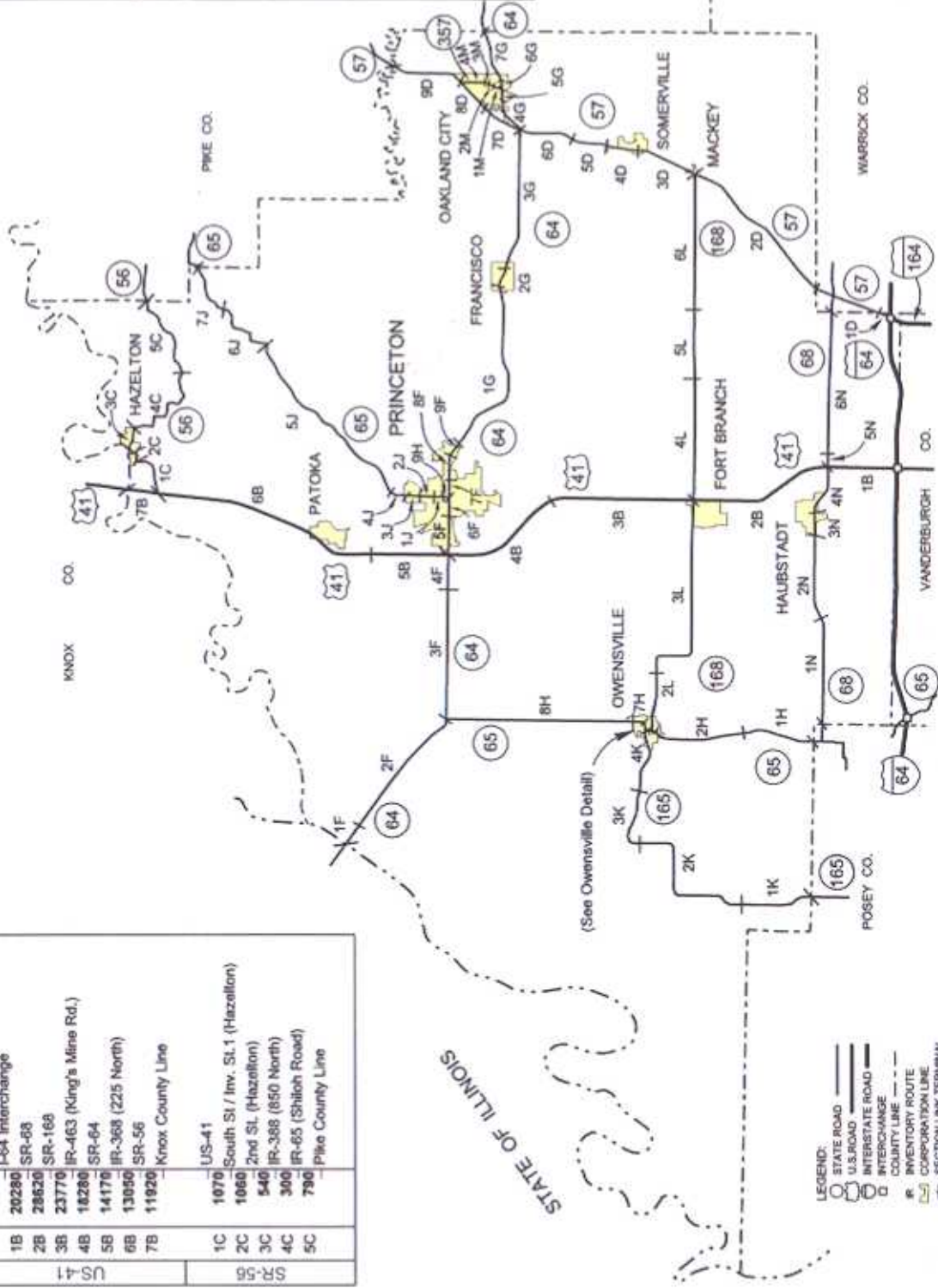
INDIANA STATE DEPARTMENT OF HIGHWAYS  
 U.S. DEPARTMENT OF TRANSPORTATION  
 FEDERAL BUREAU OF HIGHWAYS

Scale: 1 inch = 10 miles

# GIBSON

ROAD CODE	SECTION	DAILY TRAFFIC VOLUME	DESCRIPTION OF SECTION LINK TERMINI
I-64			NOTE: For Interstate Volumes Please See Current Interstate Flow Map
US-41	1B	20280	I-64 Interchange
	2B	28620	SR-88
	3B	23770	SR-168
	4B	14280	IR-463 (King's Mine Rd.)
	5B	14170	SR-64
	6B	13090	IR-368 (225 North)
	7B	11920	SR-56 Knox County Line
SR-56	1C	1070	US-41
	2C	1060	South St. / Inv. SL1 (Hazellton)
	3C	540	2nd St. (Hazellton)
	4C	300	IR-388 (850 North)
	5C	790	IR-65 (Shiloh Road) Pike County Line

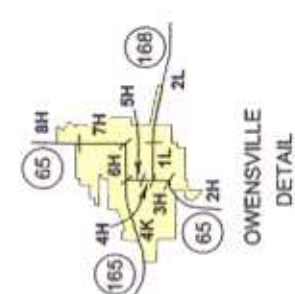
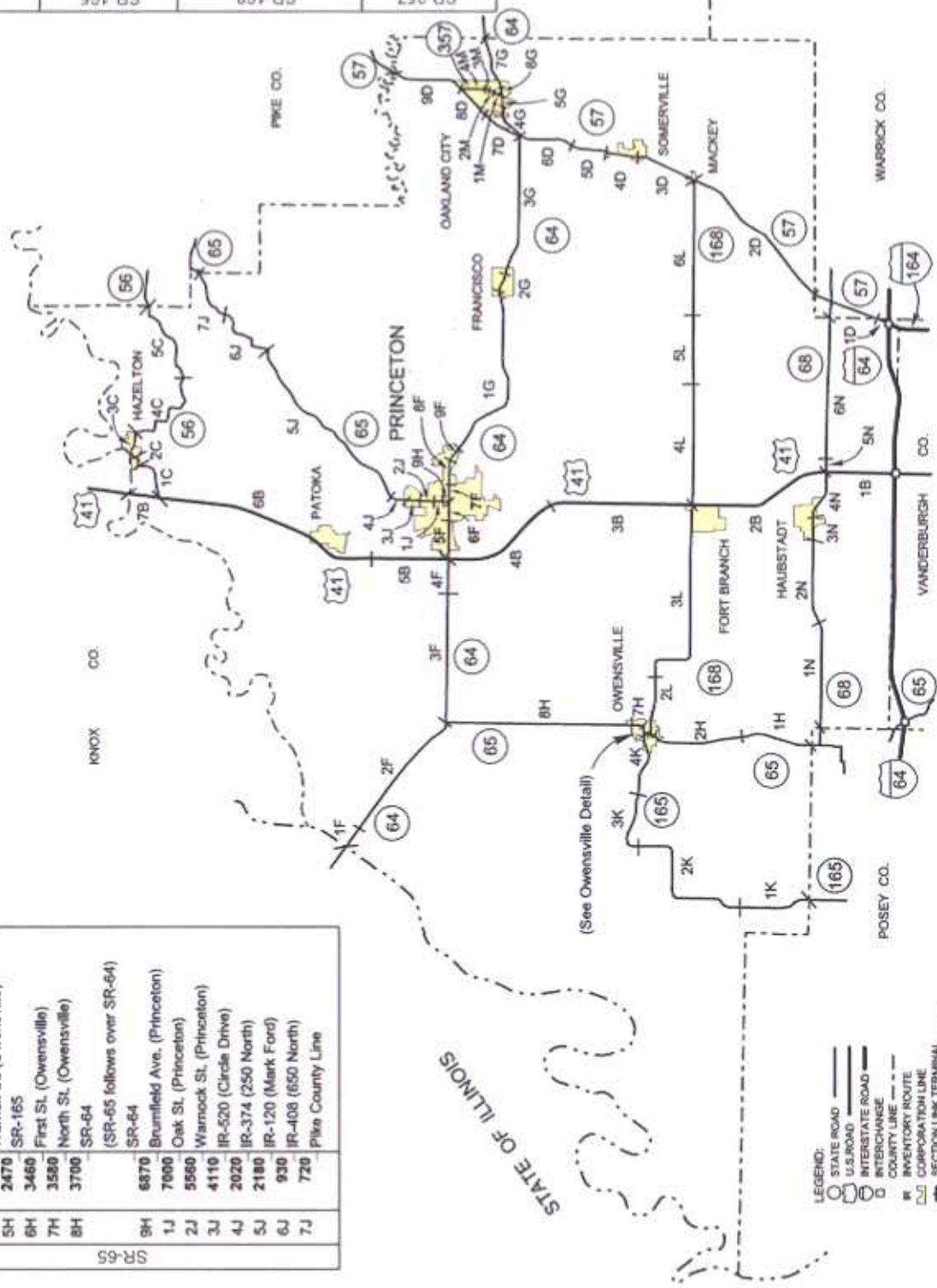
ROAD CODE	SECTION	DAILY TRAFFIC VOLUME	DESCRIPTION OF SECTION LINK TERMINI
SR-57	1D	9760	I-164 / I-64 Warrick County Line
	2D	8900	Warrick County Line
	3D	6670	SR-168
	4D	6930	Main St. (Somerville)
	5D	7330	IR-76 (450 South)
	6D	8220	IR-72 (350 South)
	7D	8110	SR-64
	8D	5400	College St. (IR-448 / 100 S)
	9D	5880	SR-357 Pike County Line
	1F	7510	Illinois State Line
	2F	8470	IR-343 (965 West)
	3F	9530	SR-65 (Jct. South)
	4F	19520	IR-367 (275 West)
	5F	17730	US-41
	6F	12130	Spring St. (Princeton)
	7F	9760	SR-65 (Jct. North)
	8F	9930	State St. (Princeton)
	9F	6680	Lake Rd. (Princeton)
	1G	5290	IR-277 (150 East)
	2G	6250	Main St. (800 East)
	3G	6190	Center St. (Francisco)
	4G	6590	SR-57
	5G	6160	SR-357
	6G	4110	Gibson St. (Oakland City)
	7G	4040	IR-452 (Harrison St.) Pike County Line



# GIBSON

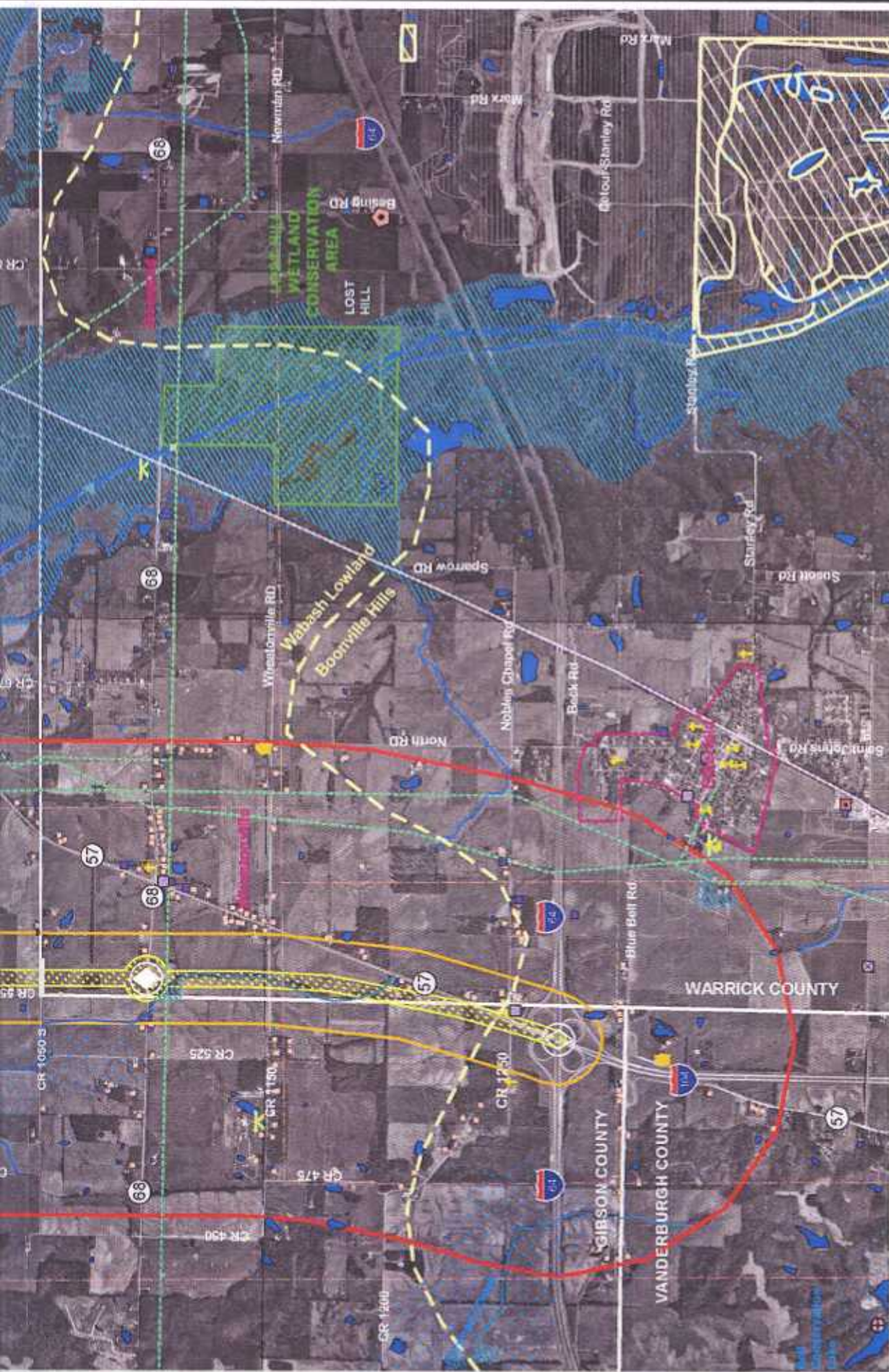
SECTION	DAILY TRAFFIC VOLUME	DESCRIPTION OF SECTION LINK TERMINI
1H	1320	Posey County Line
2H	1190	IR-18 (850 South)
3H	1620	Mill St. (Owensville)
4H	1780	SR-168
5H	2470	Warrick St. (Owensville)
6H	3460	SR-165
7H	3580	First St. (Owensville)
8H	3700	North St. (Owensville)
9H		SR-64
1J	6870	(SR-65 follows over SR-64)
2J	7900	Brunfield Ave. (Princeton)
3J	5560	Oak St. (Princeton)
4J	4110	Warrick St. (Princeton)
5J	2020	IR-520 (Circle Drive)
6J	2180	IR-374 (250 North)
7J	930	IR-120 (Mark Ford)
	720	IR-408 (650 North)
		Pike County Line

SECTION	DAILY TRAFFIC VOLUME	DESCRIPTION OF SECTION LINK TERMINI
1N	850	Posey County Line
2N	1150	IR-97 (350 West)
3N	1540	Elm St. (Haubstadt)
4N	3740	Main St. (Haubstadt)
5N	3550	US-41
6N	2910	IR-107 (150 East)
		Warrick County Line
1K	1890	Posey County Line
2K	1200	IR-18 (850 South)
3K	1840	IR-44 (550 South)
4K	2470	IR-5 (850 West)
		SR-65
1L	1920	SR-65
2L	2810	First St. (Owensville)
3L	2950	IR-39 (500 South)
4L	1850	US-41
5L	1660	IR-21 (350 East)
6L	1230	IR-11 (550 East)
		SR-57
1M	3340	SR-64
2M	3530	Oak St. (Oakland City)
3M	2340	Washington St. (Oakland City)
4M	1590	College St. (Oakland City)
		SR-57









**I-69 EVANSVILLE TO INDIANAPOLIS STUDY  
Tier 1 Environmental Impact Statement**

Preferred Alternative 3c Page 1 of 20

Bernardin, Lochmuller & Associates, Inc.  
UTM 18, NAD83, meters  
DATE: 2003 v. 1115

Note: GIS data used to create this map are from the best known sources existing at this time. However, experience shows that many national datasets such as cemeteries, churches, airports, schools, karst, etc. are not all inclusive. Some national datasets are created on a much smaller scale than that mapped here and as a result have positional inaccuracies. Use of this map should be limited to planning, but should not replace field review or background checks with other sources.



1"=30000  
inch = 3000 feet



**Comments:**

**COVERAGE:** I-64+154 Interchange to Hallmoon Creek (N of Mackey) in Gibson and Warrick Counties  
**CITY/TOWNS:** Ellettsfield, Wheatonville, Mackey  
**STREAM CROSSINGS:** Pigeon Creek (mainstem, tributary, tributary longitudinal encroachment (1 mi)), Smith Fork of Pigeon Creek (2 tributaries)  
**INTEREST:** Fertilized with scattered bones, Pigeon Creek floodplain and wetland woods, low-voltage powerlines (12000), pipelines, Wabash Erie Canal, many of wells and some gas wells north of Pigeon Creek, extensive wetland complex east of corridor along Pigeon Creek and Big Creek containing managed bottomlands and wetland conservation (S of Buckskin and Robb), older farm, older church within working alignment (near I-64 interchange), UST near I-64, possible classified wildlife areas  
**POTENTIAL INTERCHANGES:** SR 68, SR 168  
**EXISTING INTERCHANGES:** I-64+104/SR 57  
**POTENTIAL GRADE SEPARATION:** CR 1050 S, CR 850 E  
**OTHER:** The champion black willow is east of the corridor near SR 57/Pigeon Creek. Several state endangered birds and a snake may be present.  
**PHYSIOGRAPHIC REGION:** Boonville Hills (S-64 and south), Wabash Lowland (moor)